



Apt 137 The Hallmark, Green Quarter, Cheetham Hill Road, Manchester, M4 4FZ

EWS1 certified/Mortgage and cash buyers invited.

Jordan Fishwick are pleased to offer for sale this impressive new 13th floor apartment offering great views, covered balcony and high specification fixtures and fittings throughout. The apartment is approximately 931 sq ft in total. Comprising of entrance hallway with dark wood flooring leading to open plan living area, gloss kitchen with integrated appliances including dishwasher. Large storage closet housing washer drier. Three double bedrooms, all with fitted mirrored wardrobes, the master benefitting from a stunning en-suite with rain effect shower. Large hotel style main bathroom. There is a balcony accessed via one of the three bedrooms. There are also two parking spaces included within the sale price. Rented at £1800 until March 2023@ 5.6% net yield.

The development includes access to a residents-only ground floor terrace with covered seating area, landscaped 12th floor roof garden with amazing views, spacious interior designed lobby and concierge facilities. Secure bike storage also on site. The Hallmark is an architectural landmark for the area. A prominent building, with a sophisticated bronze coloured facade. The stylish and contemporary interiors feature high specification finishes that have been carefully selected to complement the eye-catching architecture. With excellent transport connections, The Hallmark stands proudly on the doorstep of one of Manchester's most vibrant districts.

Price £365,000

Viewing arrangements

Viewing strictly by appointment through the agent
245 Deansgate, Manchester, M3 4EN 0161 833 9499 opt 3

Entrance Hall

Wooden flooring. Spotlights. Wall mounted electric heater.
Access to all rooms. Storage cupboard housing boiler.

Living Room/Kitchen

20'6" x 15'9"

Range of wall and base units with complimentary work tops over. Integrated fridge/freezer and dishwasher. Sink with mixer tap. Under counter lighting. Wooden flooring.
Spotlights. Wall mounted electric heater. TV and telephone point.

Bedroom One

15'0" x 9'0"

Fitted carpet. Spotlights. Fitted wardrobes. Wall mounted electric heater.

En-suite

8'7" x 5'1"

Partially tiled. Shower cubical with mixer shower over. Low lever W/C. Pedestal sink with mixer tap. Heated towel rail.

Bedroom Two

13'3" x 9'7"

Fitted carpet. Spotlights. Fitted wardrobes. Wall mounted electric heater.

Bedroom Three

13'3" x 9'7"

Fitted carpet. Spotlights. Fitted wardrobes. Wall mounted electric heater. Access to enclosed balcony.

Bathroom

7'4" x 6'5"

Three piece bathroom. Partially tiled. Bath with mixer shower over.
Low lever W/C. Pedestal sink with mixer tap. Heated towel rail.

Externally

Private balcony. Roof top terrace. 24 hour concierge. Bike storage. Lifts to all floors.

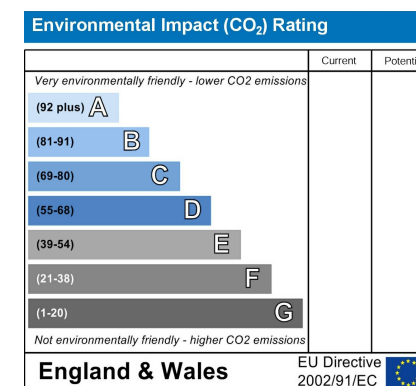
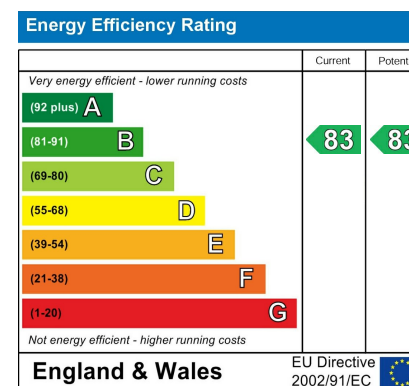
Additional Information

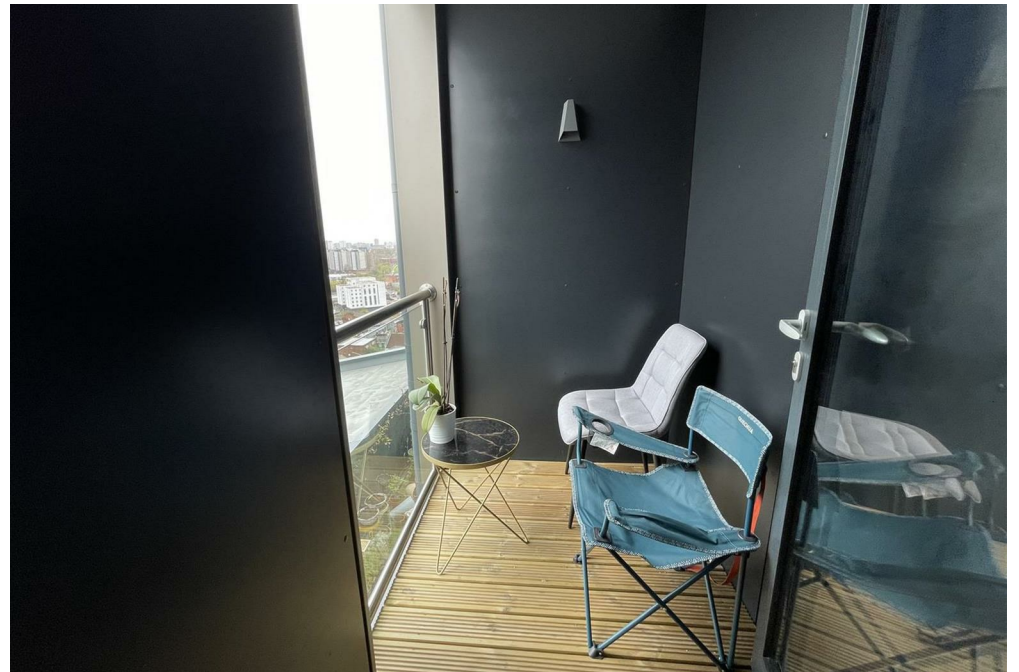
Lease - 150 Years from 01st August 2006 £300 increases after 22 years in line with RPI and then every 10 years thereafter.

Service charges - £384 per month (including buildings insurance)

Ground rent - £400 per annum

Council Tax Band E





13TH FLOOR
86.5 sq.m. (931 sq.ft.) approx.



TOTAL FLOOR AREA: 86.5 sq.m. (931 sq.ft.) approx.

Whilst every attempt has been made to ensure the accuracy of the floorplan contained here, measurements of doors, windows, rooms and any other items are approximate and no responsibility is taken for any error, omission or mis-statement. This plan is for illustrative purposes only and should be used as such by any prospective purchaser. The services, systems and appliances shown have not been tested and no guarantee as to their operability or efficiency can be given.
Made with Metropax ©2021



These particulars are believed to be accurate but they are not guaranteed and do not form a contract. Neither Jordan Fishwick nor the vendor or lessor accept any responsibility in respect of these particulars, which are not intended to be statements or representations of fact and any intending purchaser or lessee must satisfy himself by inspection or otherwise as to the correctness of each of the statements contained in these particulars. Any floorplans on this brochure are for illustrative purposes only and are not necessarily to scale.

Offices at: Chorlton, Didsbury, Disley, Hale, Glossop, Macclesfield, Manchester Deansgate, Manchester Whitworth Street, New Mills, Sale, Wilmslow and Withington

245 Deansgate, Manchester, M3 4EN

0161 833 9499 opt 3

manchester@jordanfishwick.co.uk

www.jordanfishwick.co.uk

